

TRANSPORT

# SCC01 Safety Critical Communications

TLIF0008 Apply safety critical communications in the rail environment

# Module Outline

[transport.nsw.gov.au](http://transport.nsw.gov.au)



RTO ID: 40657

OFFICIAL

# About SCC01 Safety Critical Communications

## Entry Requirements

You must:

- be engaged by Sydney Trains or NSW TrainLink as an employee or contractor.
- be able to understand, read and speak basic English to enrol in this course.

## Duration

- The course is completed over one (1) day.

## Delivery locations

The course is delivered at the following location/s:

- internal participants will attend training at the Transport Training Centre and other TfNSW RTO approved satellite locations.
- external participants will attend the facilities of one of the Approved Training Providers (ATPs).

## Modes of delivery

Module will be delivered via

- one day Face-to-face learning and assessment at the TfNSW training facility.

## Assessment requirements

As part of this module, you are required to successfully complete the following assessment requirements including:

- written questions
- practical observation tasks

If you are deemed Not Yet Satisfactory on your first attempt of an assessment, you will have one opportunity to resubmit your assessment task with improvements made based on assessor feedback.

Further assessment attempts are provided at the discretion of the Learning Delivery Manager (or delegate) following a review of your training and/or progress to date. If your result still remains Not Yet Competent (NYC) for the module, you will be provided with targeted coaching/training.

You have the right to appeal an NYC result.

## Materials and/or equipment required

You will be provided with the following materials and equipment:



- learner Workbooks for their own personal reference and note taking
- assessment Tools
- iPad to access Sydney Trains Network Rules and Procedures as well as the required Track Manuals.
- access to track hand tools, power tools, minor plant and measuring equipment for use in learning and assessment activities.

## Recognition of Prior Learning (RPL) / Credit Transfer (CT)

As the rail industry is a safety critical environment, it is at TfNSW's discretion to accept or decline applications for RPL where competencies of a safety critical nature are identified.

Credit Transfer can only be granted if you have attained Statement of Attainment for TLIF0008 Apply Safety Critical Communications in the Rail Environment from an Approved Training Providers.

If you can provide a Statement of Attainment for TLIF0008 Apply Safety Critical Communications in the Rail Environment from interstate, you will be required to:

- attend the one-day safety critical communications course (SCC01) to contextualise their existing learning to the Sydney Trains operational environment and specific infrastructure.
- complete the written and practical assessments.

This meets the requirements as stated in the RailSafe Network Rules and Network Procedures Training

## Learning outcomes

The module aims to equip Rail Workers with the required knowledge and skills to be able to:

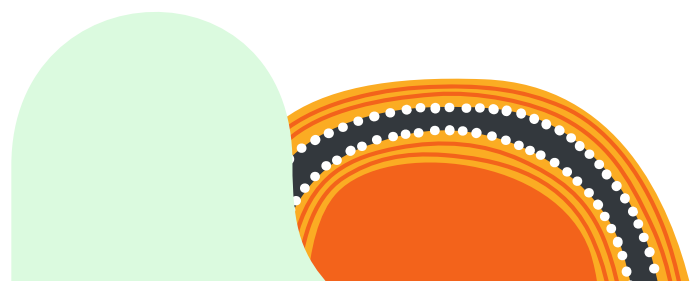
- apply effective safety critical communications behaviours in their role in the rail environment.
- apply communication protocols, providing read backs and confirmation, and using standard, concise, and unambiguous phrases.
- identify common communication barriers and hazards, assess their risks, and adopt strategies to overcome them.
- exchange safety critical information clearly, in an accurate and timely manner, and in accordance with safety management system and regulatory requirements
- use active listening, adjust delivery to suit the receiver and use effective methods of communication.
- provide timely and accurate operational information and coordination including location.

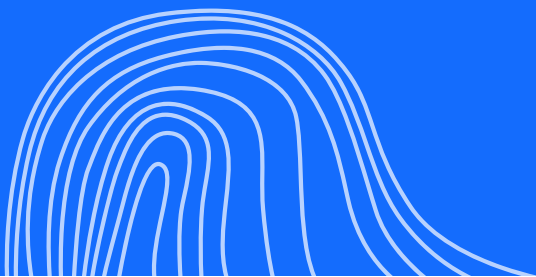
- information, changes in operational status of communication facilities and network conditions.
- issue and record rail operations information in accordance with workplace procedures and regulatory requirements.
- respond to unplanned situations, obtaining sufficient information from relevant sources, and prioritising needs in accordance with workplace procedures.

### Nationally recognised units of competency

At the successful completion this module, you will be issued with a nationally recognised qualification which will include the following units of competency:

- TLIF0008 Apply safety critical communications in the rail environment





**© Transport for New South Wales**

Transport for NSW has copyright in this publication. Other than for the purposes of and subject to the conditions prescribed under the Copyright Act, no part of it may in any form or by any means be reproduced, stored in a retrieval system or transmitted without prior written permission of Transport for NSW.